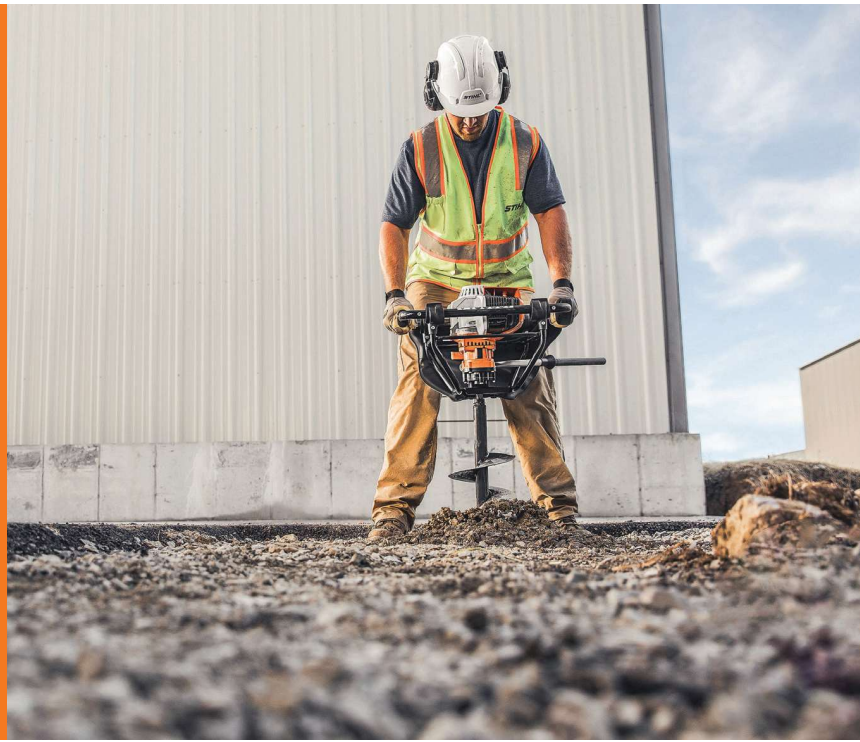


# AUGERS & DRILLS

STIHL power augers and wood boring drills deliver strength, versatility, and dependable performance for flower plantings and deep root fertilization to small and large post holes, with customizable drill bits and accessories to meet your needs.



## BT 131 EARTH AUGER



The high-performance and lightweight BT 131 earth auger is the right solution for post-hole digging, fence installation, large planting projects, environmental restoration, and construction projects.

**Note:** Augers and bits sold separately.

### STIHL QUICKSTOP® AUGER BRAKE

This braking system is designed to stop the bit from digging when the auger hits a hard underground impediment.

### VIBRATION-DAMPENING SYSTEM

This advanced vibration-dampening frame increases user comfort and helps reduce operator fatigue, especially when used over long periods of time.

### LONG-LIFE AIR FILTRATION SYSTEM

The long-life air filtration system helps reduce the need for frequent filter cleanings.

### QUICKSTOP® DRILL BRAKE

Acts to stop backwards rotation. A jammed drill bit can simply be unscrewed from the borehole.



### BT 45 EARTH AUGER DRILL



Ideal for mass flower plantings or deep root fertilization, the compact BT 45 earth auger drill helps users work through large amounts of soil quickly with less fatigue.



BT 45 with core drill adapter and water tank shown.

**Note:** The BT 45 earth auger drill is not for rocky, compacted soil, or drilling large post holes.

**Note:** Augers and bits sold separately.



### BT 45 WOOD BORING DRILL



This portable, lightweight, and gasoline-powered drill is ideal for occasional use in building or repairing bulkheads, fences, or retaining walls.



**Note:** Augers and bits sold separately.

Power Source Type	Displacement (cc/cu. in.)	Engine Power (kW/bhp)	Weight* (lbs.)	Fuel Capacity (oz.)	Drill Speeds (rpm) – (1st/2nd/Rev)	Drilling Gear Speed (rpm)	Gear Reduction	Engine Torque (Nm / ft./lb.)	Auger Torque (Nm / ft./lb.)	Toolless Fuel Cap	STIHL Quickstop® Braking System	Simplified Starting System	Anti-Vibration System	Made in America of U.S. and global materials
-------------------	---------------------------	-----------------------	----------------	---------------------	---------------------------------------	---------------------------	----------------	------------------------------	-----------------------------	-------------------	---------------------------------	----------------------------	-----------------------	--

BORING DRILLS, AUGERS															
<b>BT 45</b> Wood Boring Drill		27.2/1.7	0.8/1.1	10.5	8.5	663/1,972/590	–	–	–	–	●	–	–	●	
<b>BT 45</b> Earth Auger Drill		27.2/1.7	0.8/1.1	10.5	8.5	663/1,972/590	–	–	–	–	●	–	–	●	
<b>BT 131</b> Earth Auger		36.3/2.2	1.4/1.9	22.0	24.0	–	200	47.5:1	1.7/1.3	81/60	●	●	●	–	–

● Standard ○ Optional – Not Applicable

\*Dry weight and powerhead only.

**Note:** Specifications are as of Oct. 1, 2025. For most recent updates, visit [STIHLusa.com](http://STIHLusa.com). Models and specifications are subject to change without notice. Manufacturer reserves the right to change appearance, function, and components of any STIHL product without prior notice.

	Part Number
<b>BT 131 EARTH AUGER BITS</b>	
1.6" (40 mm) dia.	4313 680 2030
2.4" (60 mm) dia.	4313 680 2031
3.5" (90 mm) dia.	4313 680 2032
4.7" (120 mm) dia.	4313 680 2033
5.9" (150 mm) dia.	4313 680 2034
7.9" (200 mm) dia.	4313 680 2035

	Part Number
<b>BT 131 PLANTING AUGER BITS</b>	
5.9" (150 mm) dia.	4311 680 2515
10.2" (260 mm) dia.	4404 680 1900
<b>BT 131 OTHER ACCESSORIES</b>	
18" (450 mm) Extension	4313 680 2302
7/8" Square Drive Auger Adapter	4313 680 3901
1" Square Drive Auger Adapter	4313 680 3900

°Made in America of U.S. and global materials. Accessories sourced internationally.